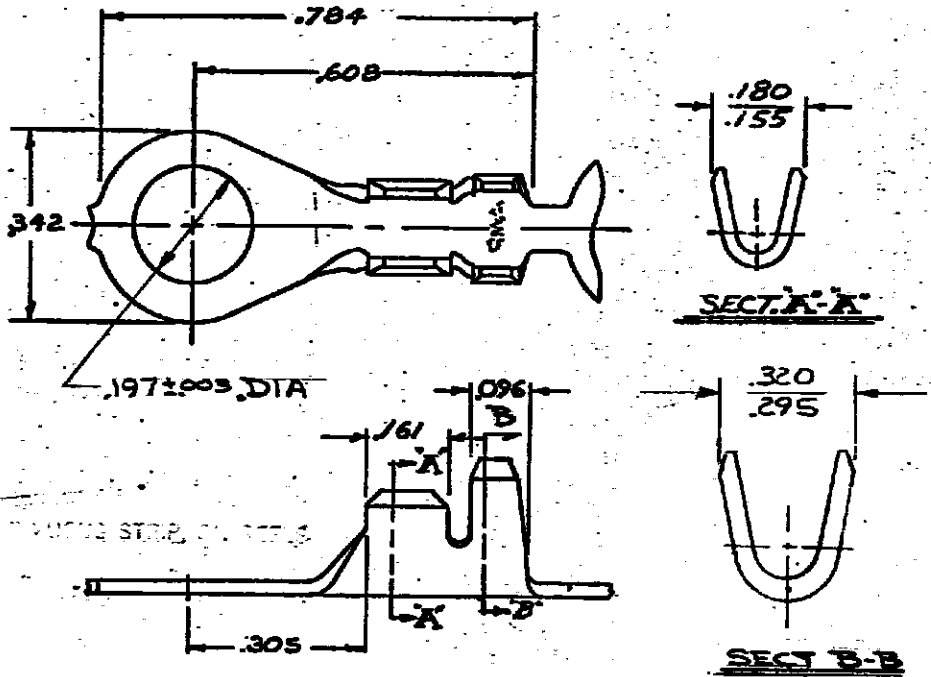


DRAWING MADE IN THIRD ANGLE PROJECTION

LOC **AF** DIST **20**


© COPYRIGHT 1975 BY AMP INCORPORATED, HARRISBURG, PA. ALL INTERNATIONAL RIGHTS RESERVED. AMP INCORPORATED PRODUCTS COVERED BY U.S. AND FOREIGN PATENTS PENDING.

REVISIONS			
LTR	DESCRIPTION	DATE	APPROVED
A	RELEASED FOR PROD PAR.	4/20/76	GY/DA
B	ADDED DASH #2 TTI 76-129	8/18/76	AMM/S.H.
C	OBSOLETE 640253-2 A-3874	6/29/78	SS/
D	RE-ACTIVATE PART NO -2	2-14-80	RES/AY
E	REVISED AF0538	10/9/84	SL/AY
F	OBS -1 + REVISED AF1705 + AF1705	5/8/86	SS/
F1	REVISED PER ECR-13-000107	9/1/13	Y.H.M



NICKEL PLATED STEEL	640253-4
REEL WITH U'S UP	640253-2
REEL WITH U'S UP	640253-1

WIRE SIZE 16-12 INSUL SIZE (2).125 DIA PART NO

UNLESS OTHERWISE SPECIFIED DIMENSIONS ARE IN INCHES. TOLERANCES ON DECIMALS ±.015 ANGLES ±	CONTRACT NO	 AMP INCORPORATED Harrisburg, Pa.		
	DR			
	MATERIAL	NAME		
	.018 BRASS	RING		
FINISH	DSGN APPD	SIZE	CODE IDENT NO	DRAWING NO
TIN	OTHER APPD	A	00779	640253
		SCALE		SHEET

AMP 1469-82 (7-73)

CUSTOMER DRAWING